



L'Énergie Sans Limite !
Safe Energy for Life !



Networks & critical applications, industrial environments

E4 Pro ONE

From 5 to 10 kVA

E4 Pro One UPS is a Online double conversion tower UPS with a power factor of 1. This is the top of range protection for the most demanding environments, where performance and reliability are required in any circumstances.

● The highest level of protection

Equipped with **Online Double Conversion technology** controlled by microprocessor, the E4 Pro One range provides the most reliable protection to the most sensitive infrastructures. Its tower format is compact which makes its integration in the most demanding environments very easy.

A **battery connector** on the rear panel allows the addition of backup modules dedicated to extending the backup time that must be available to the equipment to be protected.

On the front side, a battery status display is available on the UPS screen.

● Essential features

- Hot-swappable batteries **to avoid interrupting the supply of critical and essential loads** during maintenance work
- Hot-swappable batteries **to avoid interrupting the supply of critical and essential loads** during maintenance work
- Visual alarms and ring tones **to warn in case of problems**
- Cold start function **for troubleshooting in case of power outage**
- Automatic UPS restart when power is restored **for quick restart**
- Up to 3 UPSs can be connected in **redundant parallel mode (N+X) in order to have a capacity of 30kVA.**

Power factor of 1
Redundant parallel mode up to 3 UPS



On Line Double
Conversion Technology



LCD control screen



Ports de communication
USB, RS232 & SNMP



Remote control soft-
ware



Extended backup
time



E4 Pro One 5 to 10k VA

www.infosec-ups.com

ADVANTAGES

Power factor of 1

- Optimal output power factor : 1
- High performance
- Efficiency for critical applications

User's friendly LCD screen

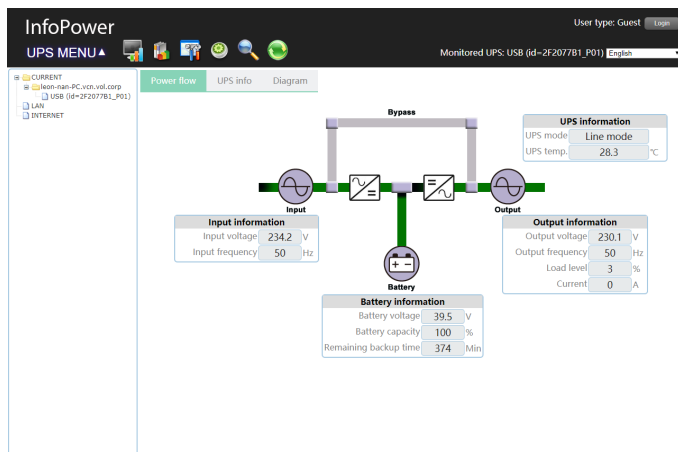
- Accurate and user-friendly LCD screen displays status and parameters in real time
- Intuitive and multi-directional : allows both Tower and Rack-mount
- Rotating front panel LCD display : gives direct access to UPS settings (adjusting output voltage...)
- Simple programming from the front panel LCD screen enables the frequency to be set to 50 or 60 Hz.

COMMUNICATION

Communication software

- InfoPower html control software (free download on the website)
- If there is no power : the UPS close the files automatically and in doing so save data from all the PCs in a network
- The communication software offers a graphic interface to view system status, various

measurements, events log, etc.



Adequate connectivity

- USB or 232 port for communication between the UPS and the various protected computer stations and servers
- SNMP slot for adding a SNMP agent (optional)

EPO emergency stop control

- This UPS is equipped with an EPO connector thanks to which EPO button can be installed.
- This function ensures the safety of personnel and equipment in the event of fire or any other emergency situation by initiating a total and immediate shutdown of the UPS.

Cold start function

- It enables an emergency situation involving a total power cut to be overcome by starting the UPS using batteries if there is no mains power supply.

Powerful built-in battery charger

- The UPS range E4 Pro One is equipped with powerful built-in chargers that can be set up from 1A to 4A in order to meet the needs of extended backup time.

Extended backup time

Additional backup modules meet the needs of demanding unstable or highly disturbed environment, providing an extended backup time.

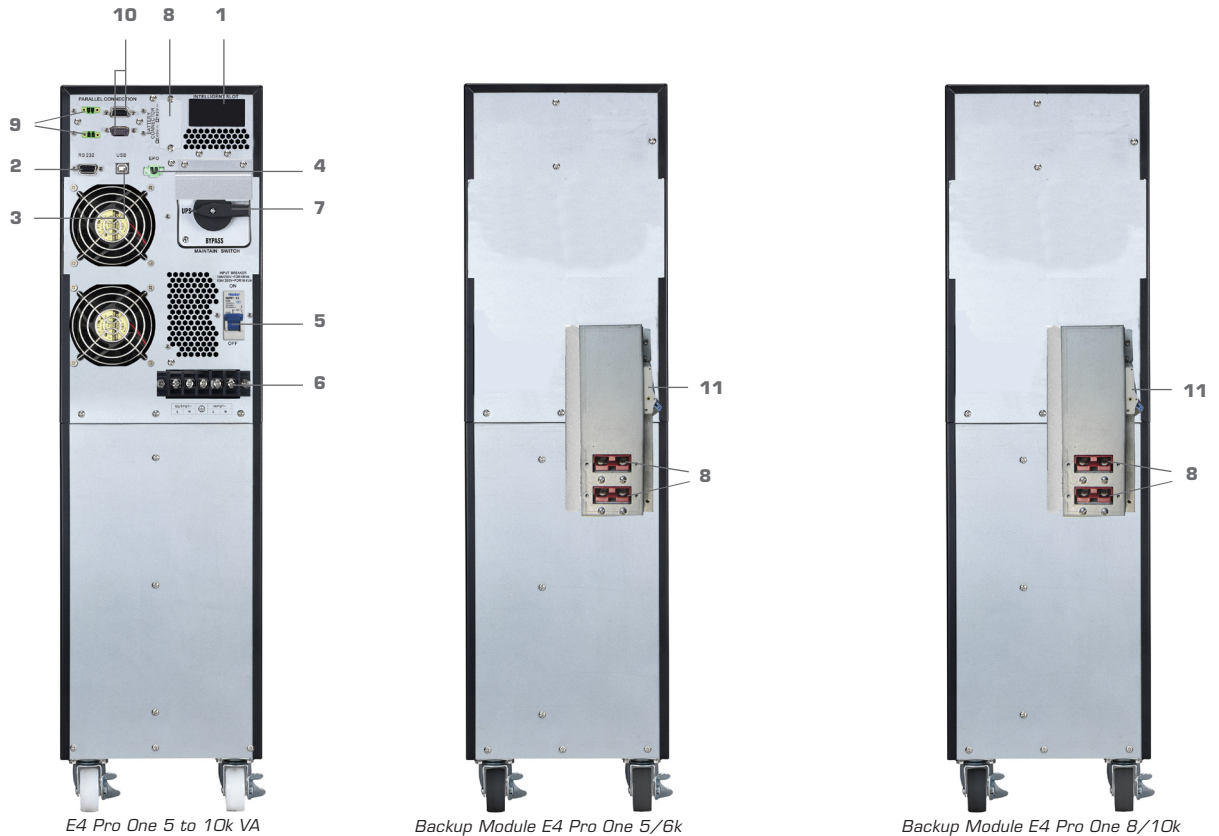


Backup module E4 Pro One 5 to 10kVA



CONNECTION

Connectivity adapted to industrial environments



E4 Pro One 5 to 10k VA

Backup Module E4 Pro One 5/6k

Backup Module E4 Pro One 8/10k

- 1 SNMP intelligent Slot
- 2 RS-232 communication port
- 3 USB communication port
- 4 Emergency power off (EPO) connector
- 5 Input circuit breaker
- 6 Input/output terminal block
- 7 Maintenance bypass
- 8 Battery connector
- 9 Share port (optional)
- 10 Parallel port (optional)
- 11 Backup Module breaker

OPTIONS

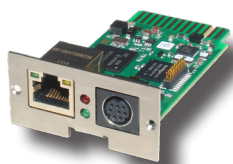
SNMP I Pro agent

The use of SNMP agent with E7 One RT UPS devices makes it easier to manage the UPS due to its many special features:

- Connection to the Ethernet network and identification by IP address (random or fixed)
- Low battery detection.
- Configuring and programming switch-off and restarts of the system on a weekly (or other) basis.
- UPS configuration locally or remotely.
- Self-diagnosis of the UPS devices while operating.
- Automatic shutdown according to pre-defined priorities on network PCs.
- Sending warning messages to users of the network / mail / GSM, etc.
- Events log.

Minislot SNMP vm Agent for Virtual Network Management

The SNMP vm Minislot agent facilitates network UPS management and virtual environments (vmWare®, Hyper V®, etc.). Associated with the UPS Management software solution, it makes it possible to control the starting and stopping of the virtual servers and their associated equipment.



Backup module

Several backup modules are available in rack format (2U or 3U). They allow adjusting the backup time necessary for the equipment to be protected.

AS400 dry contact card

The AS400 communication card supplies dry contacts to feedback alarms from your UPS (e.g. centralized technical management).

Depending on the applications, dry contacts may normally be open or closed.

Parallel installation

To enhance system security and meet the need for system flexibility and upgradability, E4 Pro One can be configured in parallel. Up to 3 units can be connected in parallel, increasing the power and redundancy for even greater security. The parallel feature is built into the UPS and is therefore configurable for free.

EMD

This detection sensor allows the remote monitoring of the temperature and humidity levels of the E4 Pro One environment. The sensor works by connecting to the SNMP card, and may also be used to send dry contacts, making it compatible with security systems or alarms.

Modbus Card

In order to communicate with installations using industrial protocols over large distances, a Modbus card can be added as an option.

TECHNICAL CHARACTERISTICS



GENERAL CHARACTERISTICS

	E4 Pro One 5000	E4 Pro One 6000	E4 Pro One 8000	E4 Pro One 10k
Technology	On Line Double Conversion			
Power (VA/W) *	5,000VA* 5,000W	6,000VA 6,000W	8,000VA 8,000W	10kVA 10 kW

PHYSICAL FEATURES

Dimensions & Weight	Dimensions L/D x W x H (mm) - UPS	442x 190 x 688		442 x 190 x 688	
	Net weight (kg): UPS	66	66	75	75

INPUT

Rated voltage	208/220/230/240VAC
Voltage range	110-300VAC \pm 3% @ 50% load/176-300 VAC \pm 3% @ 100% load
Frequency range	46~54Hz / 56~64Hz
Power factor	\geq 0.99 @ full load
Harmonic distortion	< 4% @100% load < 6% @50% load

OUTPUT

Voltage	208*/220/230/240VAC
Voltage control (battery mode)	\pm 1%
Frequency range (synchronized range)	46~54Hz / 56~64Hz
Frequency range (battery mode)	50Hz \pm 0.1Hz or 60Hz \pm 0.1Hz
Crest factor	3:1 (max.)
Harmonic distortion	\leq 1% THD (Linear load) \leq 4% THD (Non linear load)
Transfer time	Mains mode or battery mode Zero Bypass UPS Zero
Waveform	Pure sinusoidal
Standard/programmable IEC output outlets	Terminal

EFFICIENCY

Mains mode	94%
Battery mode	91%
Eco mode	99%

BATTERY

Rated voltage	192 VAC
Recharge time	9 hours at 90% capacity
Charge current (max)	1A to 4A
Cold start-up	Yes
Backup time	5 to 30 minutes depending on the connected load

BYPASS

Static bypass	Yes
Manual bypass	Yes

INDICATORS & ALARMS

LCD screen	Charge level, battery level, main mode, battery mode, bypass mode, fault indicator.
Sound alarms	Battery mode, low battery, excess load, fault

MANAGEMENT/COMMUNICATION

Communication	USB and RS232 port & Infopower software included (Windows family, Linux, Unix and MAC compatible)
SNMP	Option: power management from SNMP (VMware® compatible, Hyper V™) and Internet browser
Parallel connector	Option
EPO/CPAU connector	Yes

ENVIRONMENT

Ideal environment	20 to 90% of relative humidity @ 0-40°C without condensation
Noise level	less than 55dBA at 1 metre
Altitude of operation	less than 58dBA at 1 metre < 1,000m at rated power (> 1,000m 1% downgrade every 100m - max 4km)

STANDARDS

Standard (HV)	CE RoHS
EMC (electromagnetic compatibility)	EN62040-2: 2006+AC: 2006
Low voltage (safety)	EN62040-1:2008+A1:2013

SALES INFORMATION

SALES INFORMATION				
Warranty	2 years			
References	67629	67630	67631	67632

* Power reduction up to 60% of rated power when the output voltage is adjusted to 208VAC.
If the UPS is installed or used in a location where the altitude is greater than 1,000m, the output power shall be reduced by 1% per 100m.
Product specifications may change without prior notification.

Package content

- 1 UPS
- 1x USB cable
- 1x user manual
- 1x Infopower software

Options

Désignation	Réf
SNMP I Pro card	61556
SNMP vm Minislot card	61142
Dry contact card	61454
RS 485 card	61439
EMD (Environment Mesuring Device)	61452
Parallel Kit	61439

Warranty

Two-year warranty against manufacturing defects under normal conditions and compliance with precautionary measures.

Warranty to be taken out on www.infosec-ups.com within 10 days of purchase.



Infosec Communication

15, Rue du Moulin
44880 SAUTRON - FRANCE
Contact commercial
Tél : 02 40 76 11 77
sales@infosec.fr

BACKUP MODULES

	E4 Pro One 5000	E4 Pro One 6000	E4 Pro One 8000	E4 Pro One 10k
Dimensions - L/D x w x h (mm)	442 x 190 x 688			
Net weight - kg (empty battery cabinet)	95		115	
Références	67283		67284	

